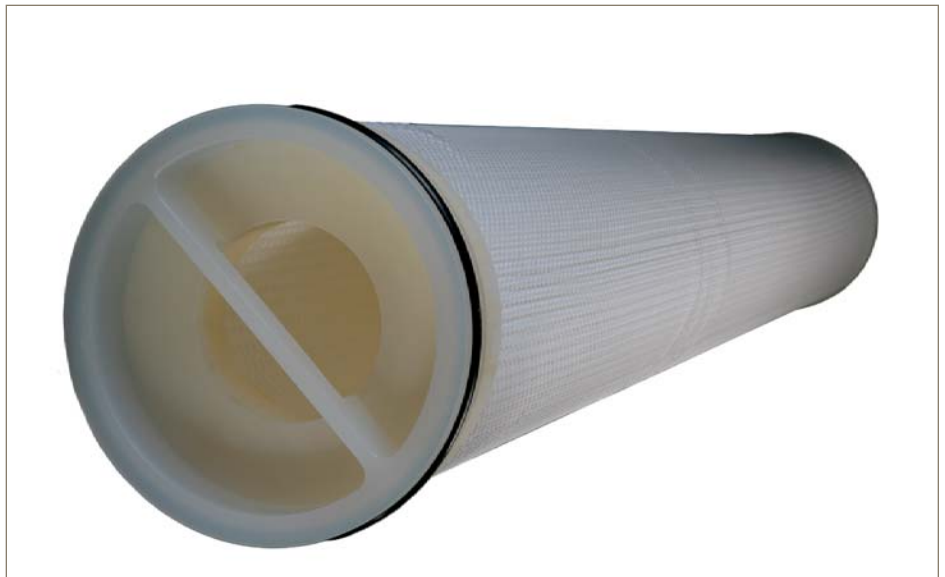


Fulflo® ParMax™ Filter Cartridges

Large-diameter, high-flow cartridges

The best of pleated and large diameter technologies are combined in Parker's ParMax™ high-flow filter cartridges. ParMax cartridges are available with polypropylene and microfiberglass media in absolute (99.98%) ratings from 1 to 90 micron. The unique layered construction provides excellent retention across a wide range of flux rates. One-six inch diameter cartridge can handle up to 500gpm flow (60" length). The inside-to-outside flow allows for a high contaminant holding capacity. High flow and a long filter life make the ParMax an ideal choice for a wide variety of critical process applications.



Contact Information

Parker Hannifin Corporation
domnick hunter
Process Filtration - North America
2340 Eastman Avenue
Oxnard, California, USA 93030

toll free +1 877 784 2234
phone +1 805 604 3400
fax +1 805 604 3401
dhpsales.na@parker.com

www.parker.com/processfiltration

Benefits

- Large diameter yields much higher flow rates compared to traditional 2.5" filters
- High flow capacity permits use of fewer elements and cuts capital expenditure
- Inside-out flow pattern ensures positive capture of contaminants
- Absolute retention ratings for critical filtration
- All materials listed as acceptable for potable and edible contact according to CFR Title 21
- Manufactured with strict quality control
- ISO9001 registered company

Applications

- Process water
- Water
- Spirits
- Food and beverage

Fulflo® ParMax™ Filter Cartridges

SPECIFICATIONS

Materials of Construction

Media:

RCP - Polypropylene
 RMG - Microfiberglass

Support/Drainage:

Polypropylene

Hardware:

Polypropylene

O-rings:

EPR, Buna-N, Viton®, silicone

Retention Ratings (99.98%)

1, 3, 4.5, 10, 20, 30, 40 and 90 µm

Maximum Operating Conditions

Maximum Temperature
 176°F (80°C) @ 30psid (2.1bar)

Maximum Differential Pressure

70psi (4.8bar) @ 77°F (25°C)
 30psi (2.1bar) @ 176°F (80°C)

Recommended Operating Conditions

Flow Rate:

Up to 175gpm (662 lpm)/20" element
 Up to 350gpm (1325 lpm)/40" element
 Up to 500gpm (1892 lpm)/60" element

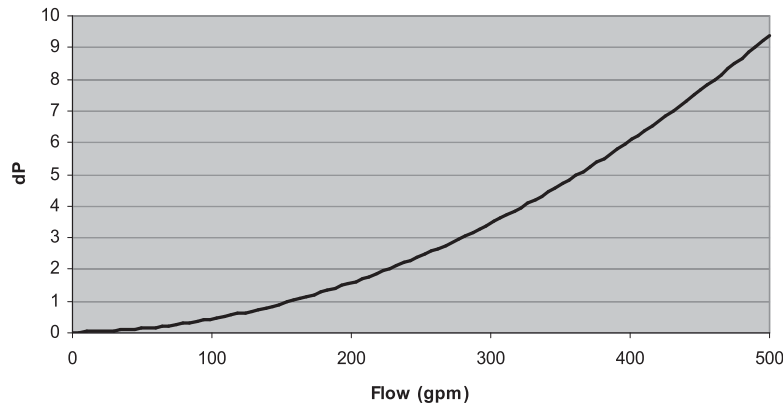
Change-out Pressure:

35psid (2.41bar)

Dimensions (nominal)

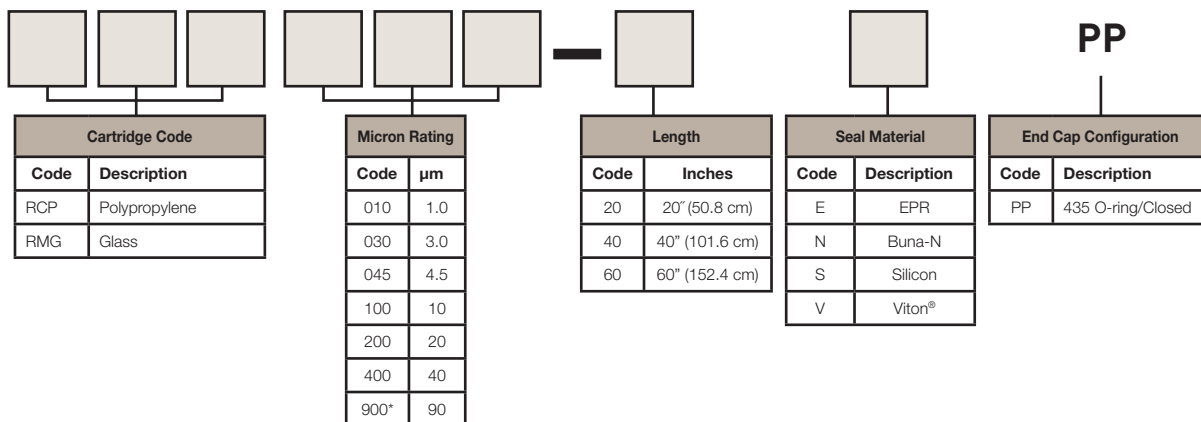
Outside Diameter: 6" (152mm)
 Inside Diameter: 2.9" (74mm)

**Flow vs dP
 (2.9" Cartridge Inlet Orifice)**



Note: The 2.9" inlet orifice of the ParMax Cartridge is the flow-limiting factor

Ordering Information



* Available only in polypropylene media (RCP)

Specifications are subject to change without notification.
 For User Responsibility Statement, see www.parker.com/safety



© 2010 Parker-Hannifin Corporation
 domnick hunter Process Filtration - North America
 All Rights Reserved
 Fulflo is a registered trademark of Parker-Hannifin Corporation
 Viton is a registered trademark of E.I. DuPont de Nemours & Co., Inc.

DS_IP_ ParMax Cartridge Rev. A